

CLE Officer Training--Part 2

Missouri-Arkansas District, 2020





Introductions:

Your Trainers for today:

Paul Eckler

Leadership Education Chair

Barbara Thompson

Past Governor and
Membership Chair

Mary Vaughan

District Secretary

Welcome to the Club Leadership Education – Part 2



What you'll learn today

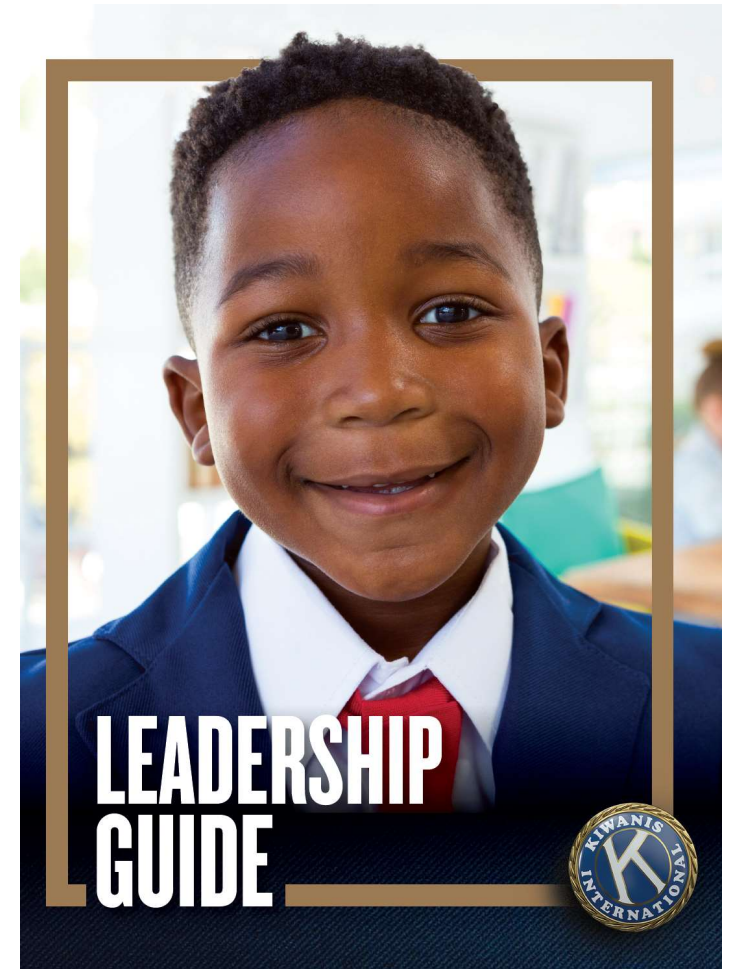


The Missouri Arkansas District Information:

- District Leadership and volunteers
- President Duties
- Membership Information
 - Dues
 - Invoicing
 - Tax Filing
- Websites – KI and MOARK
- Member Recognition
- Distinguished Club Guidelines
- Giving Guidelines
- World-Wide Service Project

2020 Leadership Guide

- Available from your Lt. Governor
- Or can be downloaded from the CLE Page on the MO-ARK Website. Moarkkiwanis.net under the District Information Menu item
- Or <https://tinyurl.com/moark-cle>
- Or from the CLE Training Chair or District Office



MO-ARK District Leadership 2020-2021

- Governor – Designate
- Governor – Elect
- Immed. Past Governor
- Secretary
- Treasurer

AC Paxton

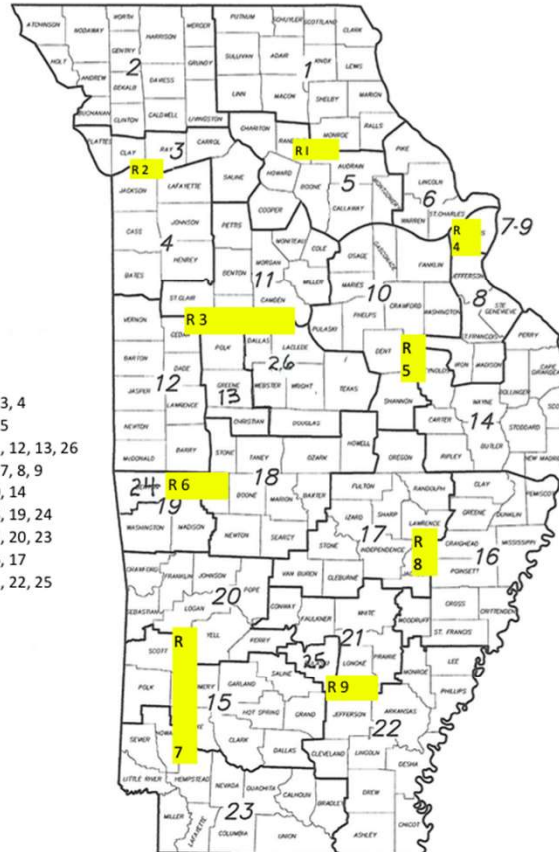
Carla O'Brien

Ron Hill

Mary Vaughan

Robin Asher

- R 1: Div. 2, 3, 4
- R 2: Div. 1, 5
- R 3: Div. 11, 12, 13, 26
- R 4: Div. 6, 7, 8, 9
- R 5: Div. 10, 14
- R 6: Div. 18, 19, 24
- R 7: Div. 15, 20, 23
- R 8: Div. 16, 17
- R 9: Div. 21, 22, 25



MISSOURI-ARKANSAS DISTRICT of
KIWANIS INTERNATIONAL
- DIVISION BOUNDARIES -

Missouri-Arkansas District Trustees 2020-2023

<u>Region One Trustee</u>	<u>Region Four Trustee</u>	<u>Region Seven Trustee</u>
<u>10-1-20 to 9-30-23</u>	<u>10-1-20 to 9-30-21</u>	<u>10-1-20 to 9-30-23</u>
William Dooley Richmond Divisions 2, 3, 4	Martha Radginski O'Fallon Divisions 6, 7, 8, 9	Susan Lafond Greater Hot Springs Village Divisions 15, 20, 23
<u>Region Two Trustee</u>	<u>Region Five Trustee</u>	<u>Region Eight Trustee</u>
<u>10-1-18 to 9-30-21</u>	<u>10-1-20 to 9-30-23</u>	<u>10-1-18 to 9-30-21</u>
John Buckwalter Kirksville Divisions 1,5	Garry Warner Sikeston Divisions 10, 14	Roy Ockert Jonesboro Divisions 16, 17
<u>Region Three Trustee</u>	<u>Region Six Trustee</u>	<u>Region Nine Trustee</u>
<u>10-1-19 to 9-30-22</u>	<u>10-1-19 to 9-30-22</u>	<u>10-1-19 to 9-30-22</u>
Les Mace Springfield South Divisions 11, 12, 13,26	Rick Quattlebaum Harrison Divisions 18, 19, 24	Thom South Conway Divisions 21, 22, 25

2020 - 2021 Lt. Governors

• Division 1	Rachael Young	Kirksville
• Division 2	Vacant	
• Division 3	Greg Atkins	Gladstone
• Division 4	John Hoffman	eCentennial
• Division 5	Ken Jarvis	Columbia-Boonslick
• Division 6	Arthur Castile	St. Charles
• Division 7	Chuck Seevers	Bridgeton
• Division 8	Becky Panchot	Farmington
• Division 9	Jim Fritz	Gravois, St. Louis County
• Division 10	Kathleen Skrivan	Union
• Division 11	Les Mace	Springfield South
• Division 12	Judge Victor Head	Carthage
• Division 13	Shane Stahl	Christian County, MO

2020 - 2021 Lt. Governors, con't

• Division 14	William (Bill) York	Sikeston
• Division 15	Kathleen Kinney	Greater Hot Springs Village
• Division 16	Vacant	
• Division 17	Lyndal Waits	Batesville
• Division 18	Troy Massey	Harrison
• Division 19	Sue Storey	Rogers Noon
• Division 20	Vacant	
• Division 21	Cassandra Feltrop	Searcy
• Division 22	Stewart Marshall	Pine Bluff
• Division 23	Elbert Bradley	Foreman
• Division 24	Dr. Blake Robertson	Springdale
• Division 25	Haskell Anderson	North Little Rock
• Division 26	Vacant	

2020-2021 Missouri-Arkansas District Chairs

Service Leadership Programs Administrators:

• Aktion Club	Stamps, Dolores	dartstamps@gmail.com
• Builders Club	Dooley, William	dooleywilliam@aim.com
• Circle K	Hammond, Richard	rhammond@uca.edu
• Key Club	Hoffman, John	lifewell@comcast.net
• Key Leader	Goss, John	johnginlr@aol.com
• Kiwanis Kids	Sutton, David	dsutton1949@yahoo.com

Committee Chairs:

- Bulletin Editor
- Bylaws and Policies
- District Convention
- Finance
- Human and Spiritual Values
- K I Convention
- Resolutions
- Service
- Web Administrator

Baker, Diane
Anderson, Cheryl
Rennard, Katie
Ockert, Roy
South, Thom
Vaughan, Mary
Warner, Garry
Deb Hoffman
Eckler, Paul

dmbakerar@gmail.com
clanderson8247@sbcglobal.net
katierennard@live.com
royo@suddenlink.net
tjsouth@conwaycorp.net
Kiwanismoark@outlook.com
gswarner1970@gmail.com
lifewell2@comcast.net
paul.eckler@att.net

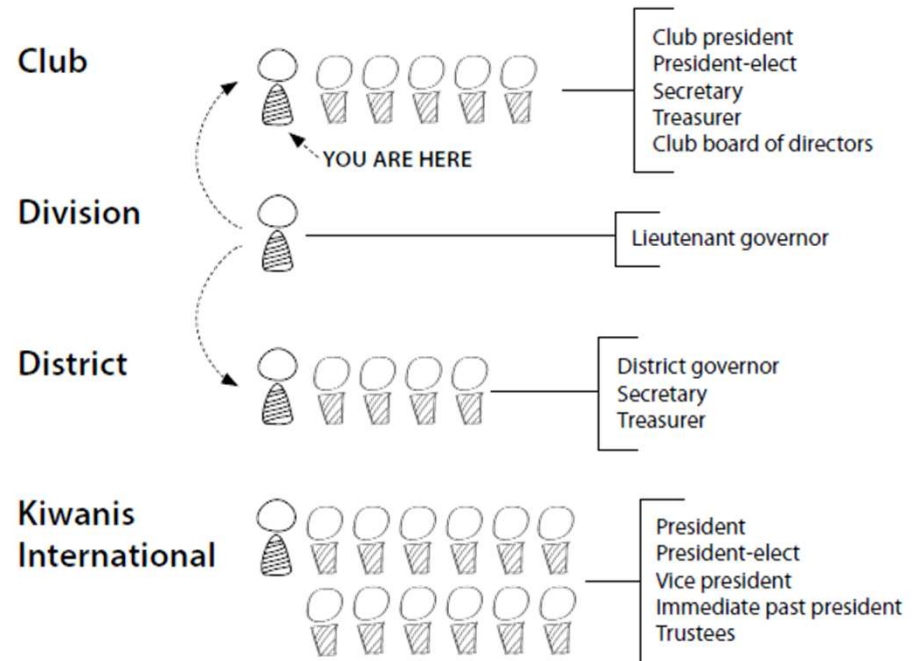
Key Positions

• Membership and Engagement	Thompson, Barbara	barbthompson4kiwanis@gmail.com
• Kiwanis Children's Fund	Hoff, Nancy	nancyhoff@reecenichols.com
• Leadership Development Co	Eckler, Paul	paul.eckler@att.net
• Partnership Coordinator	Wiltgen, Jim	wiltgen@hendrix.edu
• Public Relations Coordinator	Baker, Diane	dmbakerar@gmail.com
• Risk Manager	Fedora, Punky	punky.fedora@yahoo.com
• Youth Protection Manager	Storey, Paige	michaelapaigestorey@gmail.com

Where you fit in the big picture



LEADERSHIP STRUCTURE





Club Presidents

- Committee chair appointment:
Recommended by July 15.
- Committee chairs select members by August 1.
- President's Planning Conference by Sept. 30.
- *See page 21 in Leadership Guide.*
- Follow monthly checklist (available on CLE page on District website or on Kiwanis.org under Member Resources).

Club President

- *(from page 16 Leadership Guide)*
- Responsibilities
- Work closely with board of directors & committee chairs to establish and follow a strategic plan.
- Set goals for improving the members' club experience.
- Increase the club's impact in the community by adding new members
- No. 1 Qualification: Empowers & inspires members





Membership Classes

Regular - \$97 = \$52 KI Dues

\$8 (mag)

\$17 (ins)

\$20 (MOARK)

??? Club Dues

- Corporate \$97 same as above but open ind.
- Spouse \$89 = \$8 credit for mag
- Life 15 x \$52 (= \$780) and 3 yr. min \$52 credit
- Honorary \$8 for magazine
- Former Key Club/Circle

K2yr dues credit (\$52 + \$20 MO
ARK)



New Member Dues

New member add fee:

- \$50(KI) + \$20(MO-ARK)= \$70
- Waived for former SLP members
- Currently there are no new member add fees:
- Kiwanis International fees Waived
- Missouri Arkansas Fees Waived
 - Until September 30, 2020
 - All new members added from 8/1/2020 – 9/25/2020 will be reimbursed dues for 2020-2021 by MOARK

Sample Schedule Club Dues Invoicing

By Aug 1 – Annual dues set in club bylaws.

By Aug 15 – Secretary issues invoices to members.

By Sept 30 – Club board suspends non-payers; secretaries drop suspended non-payers.

Oct 1 – Kiwanis International freezes roster.

Oct 5-10 – Additional drops may be made. KI invoices for official roster as of end of day on Oct 10.



IRS Filing Requirements

- Form 990N or Form 990-EZ
- Due Feb 15 each year (Oct 1 fy)
- Tax Exemption Revoked after 3 yr.
- Must apply (and pay fees) for reinstatement

State Requirements

- Incorporate with the Secretary of State
- MO: File Biennial Registration Report
- AR: Annual Filing
- Failure to file:
 - Administrative Dissolution
 - Must apply for reinstatement

Free Club Website from Kiwanis International

To Apply:

- For a club interest form contact Paul Eckler at paul.eckler@att.net
- Will receive a sample website to modify for your club's requirements
- Access to training modules and a Microsoft Teams site for webmasters
- Provided at no cost by Kiwanis International. Kiwanis hosts the websites and manages the WordPress software upgrades and security.

Features:

- Free Facebook feed
- Google calendar feed
- Payment capabilities
- Forms
- Mobile-responsive design
- Free logo design

MO-ARK Website

Moarkkiwanis.net

News, District &
Club Officers

Conventions,
Foundations

Programs,
Scholarships

Key Leader

Tax Exempt
Guidelines

Membership Info
& Dues

MO-ARK CLE Page

- Part of the MO-ARK Webpage
- Under District Information Menu Item
- Or directly at: <https://tinyurl.com/moark-cle>
- List of Certified Trainers – ask for help
- Copies of Handouts
- Download CLE Powerpoints and Leadership Guide

CLE Handouts

- Dues: Changing By-Laws Mandatory Policies
- Gateway Region Kiwanis Foundation
- Invocation For Installation Dinner
- Les Mace Fellowship
- Meeting Minutes
- MOARK Distinguished Club Criteria
- MOARK Giving Guidelines
- Non-Denominational Invocations
- Parliamentary Procedures
- Recognition Of Members
- Too Much Stuff For Leaders

CLE Handouts, con't

- **Ways To Say Thank You**
- **Youth Protection Guidelines**
- **Annual Budget Samples**
- **Leadership Guide, 2020 edition**
- **CLE Power Points (with MO-ARK Info added, 2020 editions)**
 - Kiwanis 101 Power Point
 - President's Power Point
 - Secretary's Power Point
 - Treasurer's Power Point
 - Membership Committee Power Point
- Handouts can be found at:
<https://www.kiwanis.org/clubs/member-resources/training/club-leader>
- Or on the MOARK Website
<https://tinyurl.com/moark-cle>

MO-ARK Facebook Group

- <https://www.facebook.com/groups/58420028368/>
 - Share club activities
 - Event Fliers
 - Fund Raisers
 - Community Service
 - Awards/Donations

- Published six times per year as pdf

- Content to:

Diane Baker

122 Atchison Place

Batesville AR 72501-8014

or e-mail to moarkkiwanigram@gmail.com

- Photos preferred
- Deadline: two weeks before issue
- Posted MOARK Webpage

The logo consists of a large blue square with a darker blue tab-like shape on the right side. The text "MO-ARK" is in a bold, white, sans-serif font, and "Kiwanigram" is in a regular weight of the same font, both centered within the blue square.

MO-ARK
Kiwanigram

For members

- Life Member status.
- Legion of Honor (see description on next page).
- Ruby K pin (for inviting five or more new members).
- Distinguished member award.
- Kiwanis Children's Fund George F. Hixson Fellowship (for contribution of US\$1,000 to the Children's Fund).
- Kiwanis Children's Fund Walter Zeller Fellowship (for contribution of US\$1,250 to The Eliminate Project).
- G. Harold Martin Fellow (for contribution of US\$250 to the Key Club Youth Opportunities Fund).
- Carthage-Pullman Society Fellow (for contribution of US\$250 to the Circle K Tomorrow Fund).
- Sapphire Circle Honorary Fellow (for contribution of US\$1,000 to the Circle K Tomorrow Fund).

Member Recognition

- Legion of Honor – Lapel pin and/or certificate for 25 years of membership. Recognizes office held. Available in 5-year increments.
- See Leadership Guide pp 62-63

2020-2021 Distinguished Club Guidelines

In order to achieve Distinguished Club status, a club must meet the first two goals and five of the following six:

- The club must have a net increase in membership. The invoice you pay to Kiwanis must contain one two or more member than the invoice you paid in the previous year.
- The club must have appointed a Membership and Public Relation Chairs.

Must have at least five of the following:

- Did you sponsor or co-sponsor a new Kiwanis Club or a new Service Leadership Program. If so, what was it:
- Did both the club's President and Secretary attend Club Leadership Education either in person or online before September 30th of the year in which they were elected?
- Was the club represented by a member at one of the following: the Mid-Winter Conference, District Convention, or the International Convention and at least one Division or Regional meeting?
- Did the club provide service projects or programs for the children of the community? List one
- Did the club support the Eliminate Project or the Kiwanis International Foundation?
- Did the club sponsor a Service Leadership Program or contribute to the Districts Outreach Fund, AND contribute to at least one of the following: The Earl Collins Foundation, Foundation for Kamp Kiwanis, or Key Leader.

2020-2021
Distinguished
Club
Guidelines,
con't



MO-ARK Foundations

- Earl Collins Foundation: Annual scholarships for each division, donations to District SLPs, HQ Structure at Beatrice Johnson Kamp, and \$500 grants for SLP projects. Trustee from each division.
 - Les Mace Fellowship - \$150
 - Zimmerman Society – \$1,000
- Beatrice Johnson Youth Kamp Foundation: Developing camp in Northwest Arkansas
- Kiwanis Gateway Foundation: 501(c)3 for Region IV Kiwanis Clubs. See Region IV Trustee.
- Info: MO-ARK Website at moarkkiwanis.net



Giving Guidelines

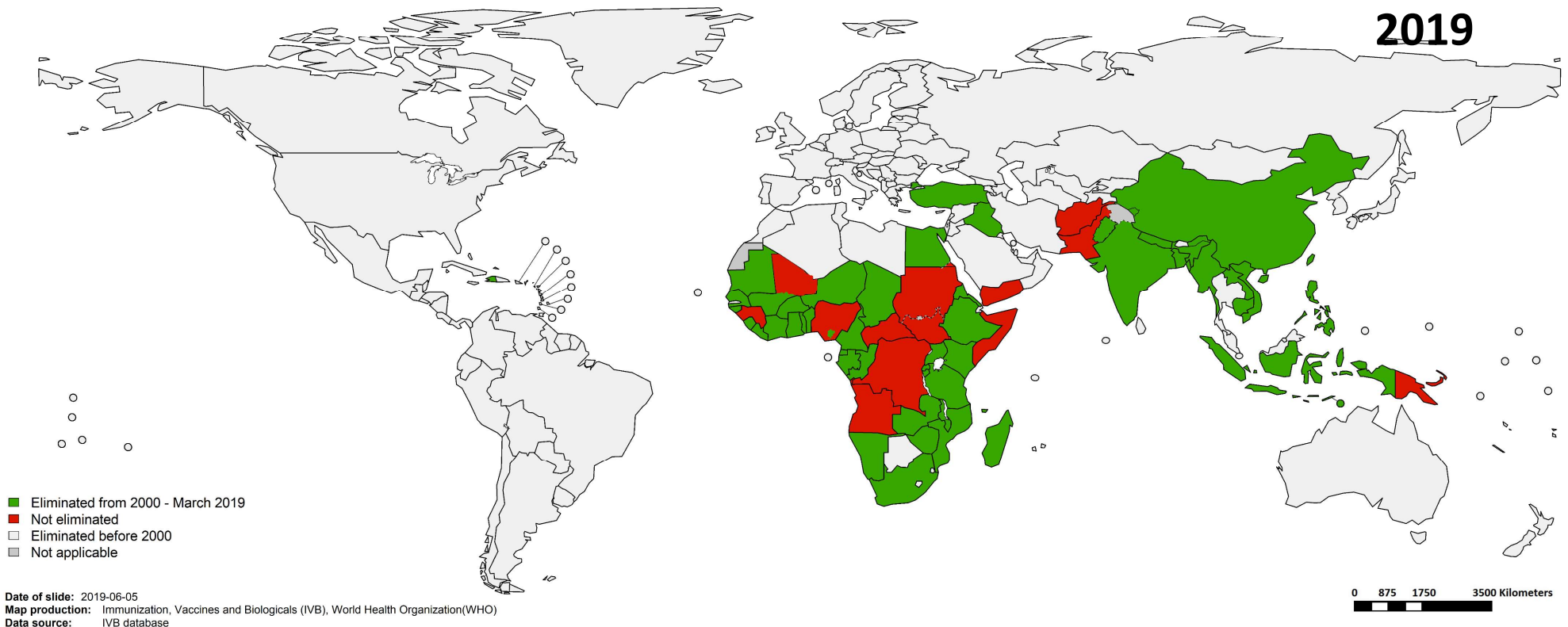
Foundations and District Youth Funds Club Budget - \$20.00 Per Member Total

- **EARL COLLINS FOUNDATION**, \$5.00 per Member – Send to Gene Bartley, Secretary, 894 Heather Circle, Conway, AR 72034
- **MO-ARK DISTRICT OUTREACH FUND**, \$5.00 per Member – send to Mary Vaughan P.O. Box 115 Saint Charles, MO 63302.
- **KIWANIS CHILDRENS FUND**, \$10.00 per Member – send to Kiwanis International, P.O. Box 6457 – Dept. 286, Indianapolis, IN 46206



Eliminate: 12 countries remaining

December
2019





What can you and your club do this Kiwanis Year?

- The MO-ARK Kiwanis District is completing our pledge of \$1.8 million to protect and save 1 million mothers and their babies from maternal/neonatal tetanus. We need \$50,000 to reach our goal. You can encourage your clubs and individual members to make gifts of any amount to the Kiwanis Children's Fund designated for Eliminate.
- For those who have Key Clubs, encourage them to "Trick or Treat for UNICEF" and send their funds in through the Kiwanis Children's Fund
- The District has matching funds available for those who would like to give a Zeller Fellowship gift which is \$1250. You give \$1000 and the District adds the \$250.
- For additional information, contact District Eliminate Advocate, Roger Jespersen, 114 Lark Hill Lane, Ballwin, MO 63021, rjespersen13@sbcglobal.net, 573-803-0757.



Questions???



Thank you for participating!

We wish you the best in a successful year of service
and leadership.